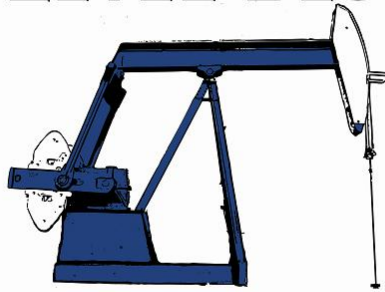


**LEVEL BEST**



**TECHNOLOGIES LTD.**

***ACOUSTIC PRESSURE SURVEY (BUILD-UP)***

***SAMPLE COMPANY  
SAMPLE et al SASKATCHEWAN 1-2-3-14  
100/01-02-003-14W2/0  
FIELD: PROLIFIC  
FORMATION: GSD***

***TEST DATES: DECEMBER 2005  
(Analysis provided by NR-Tec Ltd.)***

***DISTRIBUTION: BOB LOBLAW, Calgary, AB.***

***PREPARED BY: NR-Tec Analyst***

***DATE: 2005-12-28***

## SAMPLE COMPANY

### ACOUSTIC PRESSURE SURVEY (BUILD-UP) SAMPLE ET AL SASKATCHEWAN 1-2-3-14 100/01-02-003-14W2/0 FIELD: PROLIFIC POOL: GOODSANDS DECEMBER 2005

#### TEST SUMMARY:

- ◆ An S2S acoustic well sounder instrument was installed into the casing on 2005-12-13 at 13:04 hours. The fluid level was at 188.2 joints.
- ◆ The well was shut-in on 2005-12-13 at 13:04 hours to start the build-up.
- ◆ The build-up test was concluded on 2005-12-20 at 16:04 hours.
- ◆ A final bottomhole pressure of 9375 kPa (absolute) was calculated at the mid-point of the producing interval after 171.0 hours of shut-in.
- ◆ The rate of change in pressure during the last 8.0 hours of shut-in is 0.2 kPa/hr.

#### PRESSURE DATA CALCULATIONS:

- ◆ The bottomhole pressures were calculated using the following information:

	Atmospheric Pressure	93.0 kPa
*	Formation Depth	1879.70 m KB
	Oil Gravity	35.40° API
	Water Gravity	1.142
	Gas Gravity	0.910
	Oil Production	1.24 m <sup>3</sup> /d
	Water Production	16.46 m <sup>3</sup> /d
	Bottomhole Temperature	62.2° C

\* Deviated well; MPP and fluid levels at TVD.

#### ATTACHMENTS:

ACOUSTIC WELLSOUNDER PRESSURE SURVEY DATA  
TYPE CURVE PRE-PLOT  
BOTTOMHOLE PRESSURE VERSUS TIME  
CASING PRESSURE VERSUS TIME  
FLUID LEVEL VERSUS TIME  
PRESSURE FILE (ELECTRONIC FORMAT)



**NR-TEC LTD.**  
**ACOUSTIC WELLSOUNDER PRESSURE SURVEY**

COMPANY: **SAMPLE COMPANY**  
FIELD: **PROLIFIC**  
POOL NAME: **GOODSANDS**

WELL NAME: **SAMPLE et al SASKATCHEWAN 1-2-3-14**  
LOCATION: **100/01-02-003-14W2/0**  
STATUS: **Pumping Oil**

**TUBING**

TOTAL JOINTS = **196.000**  
TUBING BOTTOM = **1880.50** m KB  
AVG. JOINT LENGTH = **9.571** m

**ELEVATIONS**

KELLY BUSHING (K.B.) = **688.20** m  
CASING FLANGE (C.F.) = **683.60** m  
K.B. TO C.F. = **4.60** m

**PRODUCTION**

OIL RATE = **1.24** m<sup>3</sup>/d  
WATER RATE = **16.46** m<sup>3</sup>/d  
GAS RATE = **0.03** E<sup>3</sup>m<sup>3</sup>/d

**TEMPERATURES**

SURFACE TEMP. = **0.00** °C  
RESERVOIR TEMP. = **62.20** °C

**FLUID PROPERTIES**

GAS GRAVITY = **0.910**  
OIL GRAVITY = **35.400** °API  
WATER GRAVITY = **1.142**

**PRODUCING INTERVAL**

TOP OF INTERVAL = **1878.45** m KB (TVD)  
BOTTOM OF INTERVAL = **1880.95** m KB (TVD)  
MID-POINT = **1879.70** m KB (TVD)

WELL WAS SHUT-IN ON 2005-DEC-13 AT 13:04:32

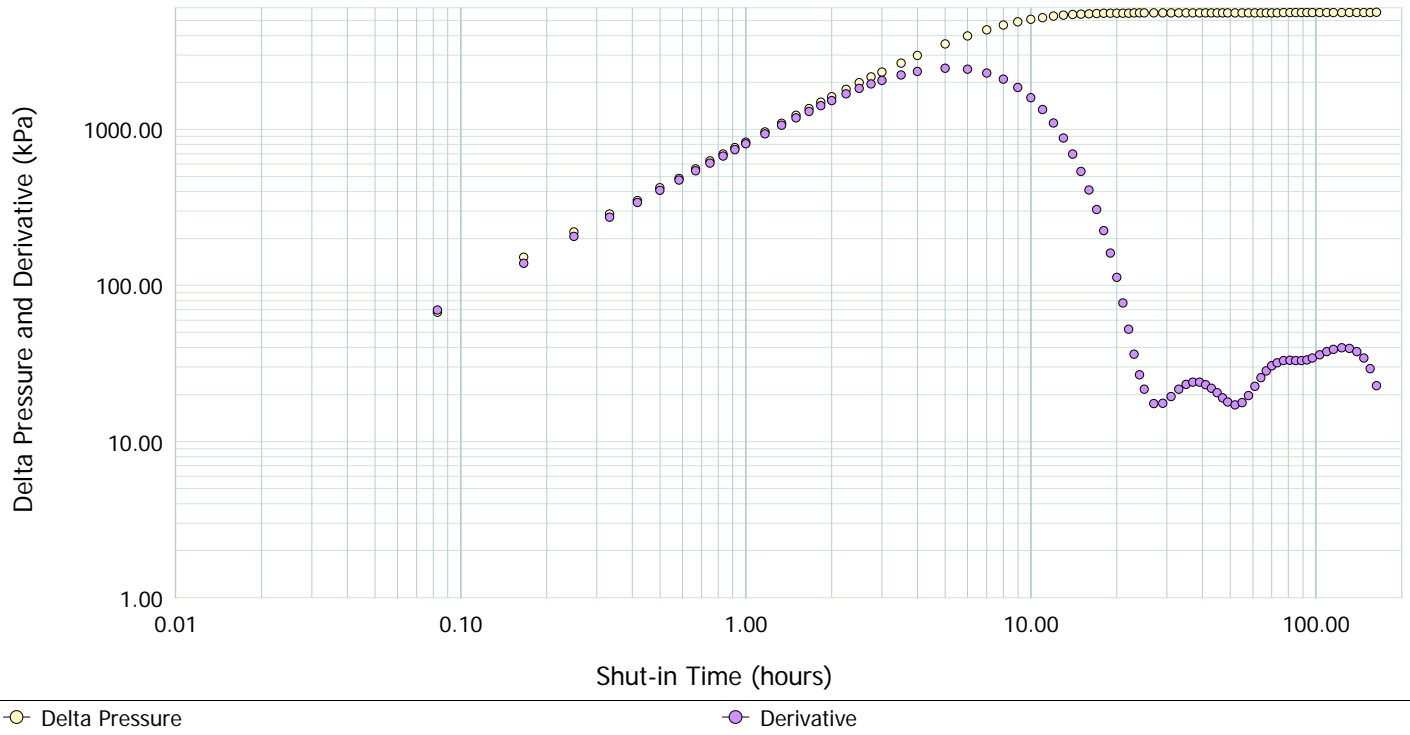
THE PRODUCING INTERVAL AND ALL CALCULATED DEPTHS HAVE BEEN CORRECTED TO TVD.

SHOT #	SHOT DATE AND TIME	TEST TIME (hours)	JOINTS TO FLUID	GAS	COL HT. (m) OIL	EMUL.	GAS	GRADIENT (kPa/m) OIL	EMUL.	CSG. (kPaa)	GAS (kPa)	PRESSURE OIL (kPa)	EMUL. (kPa)	MPP (kPaa)
1	05-12-13 13:04:32	0.000	188.21	1801.3	72.6	1.2	0.339	7.854	10.738	2549.4	611.0	569.9	13.4	3743.7
2	05-12-13 13:09:30	0.083	187.64	1795.8	72.6	6.7	0.340	7.854	10.738	2557.4	611.5	569.9	72.4	3811.2
3	05-12-13 13:14:30	0.166	186.90	1788.8	72.6	13.8	0.342	7.855	10.738	2566.0	611.6	570.0	147.9	3895.4
4	05-12-13 13:19:30	0.249	186.30	1783.0	72.6	19.6	0.343	7.855	10.739	2572.3	611.4	570.0	210.2	3964.0
5	05-12-13 13:24:30	0.333	185.72	1777.5	72.6	25.1	0.344	7.856	10.739	2580.0	611.8	570.0	269.2	4031.0
6	05-12-13 13:29:30	0.416	185.18	1772.3	72.6	30.3	0.345	7.856	10.740	2587.1	612.1	570.1	325.0	4094.2
7	05-12-13 13:34:30	0.499	184.54	1766.2	72.6	36.4	0.347	7.857	10.740	2594.7	612.2	570.1	390.6	4167.6
8	05-12-13 13:39:30	0.583	184.00	1761.0	72.6	41.6	0.348	7.857	10.740	2601.6	612.4	570.2	446.4	4230.6
9	05-12-13 13:44:30	0.666	183.36	1754.9	72.6	47.7	0.349	7.858	10.741	2609.4	612.5	570.2	512.0	4304.2
10	05-12-13 13:49:30	0.749	182.75	1749.1	72.6	53.5	0.350	7.858	10.741	2616.5	612.5	570.3	574.3	4373.7
11	05-12-13 13:54:30	0.833	182.21	1743.9	72.6	58.7	0.351	7.858	10.742	2624.3	612.9	570.3	630.1	4437.7
12	05-12-13 13:59:30	0.916	181.60	1738.1	72.6	64.5	0.353	7.859	10.742	2631.6	613.0	570.4	692.5	4507.4
13	05-12-13 14:04:30	0.999	181.06	1732.9	72.6	69.7	0.354	7.859	10.742	2638.9	613.2	570.4	748.2	4570.8
14	05-12-13 14:14:30	1.166	179.88	1721.6	72.6	81.0	0.356	7.860	10.743	2653.6	613.4	570.5	869.7	4707.2
15	05-12-13 14:24:30	1.333	178.76	1710.9	72.6	91.6	0.359	7.861	10.744	2668.1	613.8	570.5	984.6	4837.0
16	05-12-13 14:34:30	1.499	177.58	1699.6	72.6	102.9	0.361	7.862	10.745	2682.7	613.9	570.6	1106.0	4973.3
17	05-12-13 14:44:30	1.666	176.43	1688.6	72.6	113.9	0.364	7.863	10.746	2697.1	614.0	570.7	1224.2	5106.1
18	05-12-13 14:54:30	1.833	175.28	1677.6	72.6	124.9	0.366	7.864	10.746	2711.5	614.0	570.8	1342.5	5238.8
19	05-12-13 15:04:30	1.999	174.17	1666.9	72.6	135.6	0.368	7.865	10.747	2725.7	614.1	570.9	1457.4	5368.2
20	05-12-13 15:19:30	2.249	172.57	1651.6	72.6	150.9	0.372	7.866	10.748	2746.9	614.4	571.1	1621.6	5553.9
21	05-12-13 15:34:30	2.499	170.98	1636.4	72.6	166.1	0.376	7.867	10.749	2767.7	614.5	571.2	1785.8	5739.3
22	05-12-13 15:49:30	2.749	169.51	1622.3	72.6	180.2	0.379	7.868	10.750	2788.4	614.9	571.4	1936.9	5911.6
23	05-12-13 16:04:30	2.999	168.07	1608.6	72.6	193.9	0.383	7.869	10.751	2808.7	615.3	571.5	2084.8	6080.3
24	05-12-13 16:34:30	3.499	165.26	1581.7	72.7	220.8	0.389	7.870	10.753	2848.5	615.9	571.8	2374.0	6410.1
25	05-12-13 17:04:30	3.999	162.65	1556.6	72.7	245.8	0.396	7.872	10.754	2887.1	616.6	572.0	2643.5	6719.2
26	05-12-13 18:04:30	4.999	158.02	1512.3	72.7	290.1	0.409	7.874	10.757	2960.4	618.5	572.5	3120.2	7271.6
27	05-12-13 19:04:30	5.999	154.25	1476.3	72.8	326.1	0.421	7.875	10.759	3026.6	621.1	573.0	3508.2	7728.8
28	05-12-13 20:04:30	6.999	151.22	1447.3	72.8	355.0	0.431	7.876	10.761	3084.0	623.9	573.3	3820.5	8101.7
29	05-12-13 21:04:30	7.999	148.76	1423.7	72.8	378.5	0.440	7.876	10.762	3132.0	626.2	573.7	4073.7	8405.6
30	05-12-13 22:04:30	8.999	146.88	1405.7	72.9	396.5	0.447	7.876	10.763	3171.1	628.4	573.9	4267.8	8641.2
31	05-12-13 23:04:30	9.999	145.44	1392.0	72.9	410.2	0.453	7.876	10.764	3201.9	630.1	574.1	4415.7	8821.9
32	05-12-14 00:04:30	10.999	144.33	1381.3	72.9	420.9	0.457	7.876	10.765	3225.5	631.4	574.3	4530.8	8962.0
33	05-12-14 01:04:30	11.999	143.53	1373.6	72.9	428.5	0.460	7.876	10.765	3243.2	632.4	574.4	4613.0	9063.1
34	05-12-14 02:04:30	12.999	142.89	1367.5	72.9	434.6	0.463	7.876	10.765	3256.4	633.0	574.5	4678.8	9142.7
35	05-12-14 03:04:30	13.999	142.47	1363.6	72.9	438.6	0.465	7.876	10.766	3265.9	633.6	574.6	4721.6	9195.7

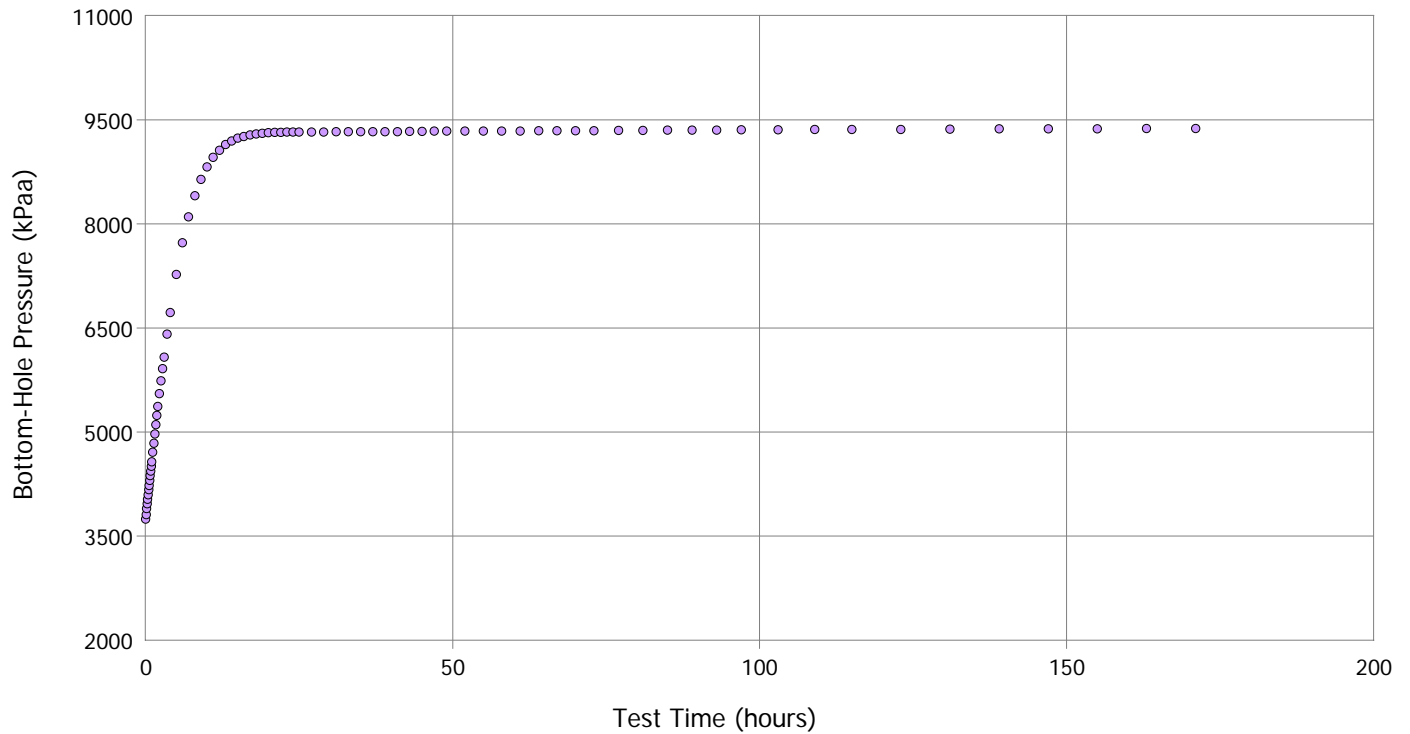
SHOT #	SHOT DATE AND TIME	TEST TIME (hours)	JOINTS TO FLUID	COL HT. (m)			GRADIENT (kPa/m)			CSG. (kPaa)	GAS (kPa)	PRESSURE		
				GAS	OIL	EMUL.	GAS	OIL	EMUL.			OIL (kPa)	EMUL. (kPa)	MPP (kPaa)
36	05-12-14 04:04:30	14.999	142.15	1360.5	73.0	441.6	0.466	7.876	10.766	3272.8	634.0	574.6	4754.5	9235.9
37	05-12-14 05:04:31	16.000	141.96	1358.7	73.0	443.5	0.467	7.876	10.766	3277.8	634.4	574.6	4774.2	9261.1
38	05-12-14 06:04:30	16.999	141.80	1357.2	73.0	445.0	0.468	7.876	10.766	3281.4	634.6	574.7	4790.6	9281.3
39	05-12-14 07:04:30	17.999	141.68	1355.9	73.0	446.2	0.468	7.876	10.766	3283.9	634.7	574.7	4803.8	9297.1
40	05-12-14 08:04:30	18.999	141.61	1355.3	73.0	446.8	0.468	7.876	10.766	3285.8	634.9	574.7	4810.4	9305.7
41	05-12-14 09:04:30	19.999	141.55	1354.7	73.0	447.4	0.469	7.876	10.766	3287.2	634.9	574.7	4817.0	9313.8
42	05-12-14 10:04:30	20.999	141.52	1354.4	73.0	447.7	0.469	7.876	10.766	3288.3	635.1	574.7	4820.2	9318.4
43	05-12-14 11:04:30	21.999	141.52	1354.4	73.0	447.7	0.469	7.876	10.766	3289.2	635.3	574.7	4820.2	9319.5
44	05-12-14 12:04:30	22.999	141.48	1354.1	73.0	448.0	0.469	7.876	10.766	3289.6	635.3	574.7	4823.5	9323.1
45	05-12-14 13:04:30	23.999	141.48	1354.1	73.0	448.0	0.469	7.876	10.766	3289.6	635.3	574.7	4823.5	9323.1
46	05-12-14 14:04:30	24.999	141.48	1354.1	73.0	448.0	0.469	7.876	10.766	3289.3	635.2	574.7	4823.5	9322.8
47	05-12-14 16:04:30	26.999	141.48	1354.1	73.0	448.0	0.469	7.876	10.766	3289.8	635.3	574.7	4823.5	9323.3
48	05-12-14 18:04:30	28.999	141.46	1353.9	73.0	448.2	0.469	7.876	10.766	3289.1	635.1	574.7	4825.7	9324.6
49	05-12-14 20:04:30	30.999	141.45	1353.8	73.0	448.3	0.469	7.876	10.766	3290.4	635.4	574.7	4826.6	9327.2
50	05-12-14 22:04:30	32.999	141.45	1353.7	73.0	448.4	0.469	7.876	10.766	3290.8	635.4	574.7	4827.6	9328.5
51	05-12-15 00:04:31	35.000	141.44	1353.6	73.0	448.5	0.469	7.876	10.766	3290.2	635.2	574.7	4828.6	9328.8
52	05-12-15 02:04:31	37.000	141.43	1353.5	73.0	448.6	0.469	7.876	10.766	3290.8	635.3	574.7	4829.5	9330.4
53	05-12-15 04:04:31	39.000	141.42	1353.4	73.0	448.7	0.469	7.876	10.766	3290.3	635.2	574.7	4830.5	9330.8
54	05-12-15 06:04:31	41.000	141.41	1353.4	73.0	448.8	0.469	7.876	10.766	3290.0	635.1	574.7	4831.5	9331.3
55	05-12-15 08:04:31	43.000	141.40	1353.3	73.0	448.9	0.469	7.876	10.766	3290.7	635.2	574.7	4832.5	9333.0
56	05-12-15 10:04:31	45.000	141.39	1353.2	73.0	449.0	0.469	7.876	10.766	3291.4	635.3	574.7	4833.4	9334.8
57	05-12-15 12:04:31	47.000	141.38	1353.1	73.0	449.0	0.470	7.876	10.766	3291.7	635.3	574.7	4834.4	9336.2
58	05-12-15 14:04:31	49.000	141.37	1353.0	73.0	449.1	0.470	7.876	10.766	3291.8	635.3	574.7	4835.4	9337.3
59	05-12-15 17:04:31	52.000	141.36	1352.9	73.0	449.2	0.470	7.876	10.766	3291.8	635.3	574.7	4836.3	9338.1
60	05-12-15 20:04:31	55.000	141.35	1352.8	73.0	449.3	0.470	7.876	10.766	3291.9	635.3	574.7	4837.3	9339.3
61	05-12-15 23:04:31	58.000	141.34	1352.7	73.0	449.4	0.469	7.876	10.766	3291.3	635.1	574.7	4838.3	9339.4
62	05-12-16 02:04:31	61.000	141.33	1352.6	73.0	449.5	0.470	7.876	10.766	3291.6	635.1	574.7	4839.3	9340.7
63	05-12-16 05:04:31	64.000	141.32	1352.5	73.0	449.6	0.470	7.876	10.766	3291.8	635.1	574.7	4840.2	9341.9
64	05-12-16 08:04:31	67.000	141.31	1352.5	73.0	449.7	0.469	7.876	10.766	3291.2	634.9	574.7	4841.2	9342.1
65	05-12-16 11:04:31	70.000	141.30	1352.4	73.0	449.8	0.470	7.876	10.766	3291.9	635.1	574.7	4842.2	9343.9
66	05-12-16 14:04:31	73.000	141.29	1352.2	73.0	449.9	0.469	7.876	10.766	3291.2	634.8	574.7	4844.1	9344.9
67	05-12-16 18:04:31	77.000	141.27	1352.0	73.0	450.1	0.470	7.876	10.766	3291.4	634.8	574.7	4845.9	9346.8
68	05-12-16 22:04:31	81.000	141.25	1351.9	73.0	450.3	0.470	7.876	10.766	3291.8	634.8	574.7	4847.6	9349.0
69	05-12-17 02:04:31	85.000	141.23	1351.7	73.0	450.4	0.469	7.876	10.766	3291.3	634.6	574.7	4849.5	9350.2
70	05-12-17 06:04:31	89.000	141.22	1351.5	73.0	450.6	0.470	7.876	10.766	3291.8	634.7	574.7	4851.2	9352.3
71	05-12-17 10:04:31	93.000	141.20	1351.4	73.0	450.8	0.470	7.876	10.766	3291.5	634.5	574.7	4853.0	9353.8
72	05-12-17 14:04:31	97.000	141.18	1351.2	73.0	450.9	0.470	7.876	10.766	3292.0	634.6	574.7	4854.9	9356.2
73	05-12-17 20:04:31	103.000	141.16	1351.0	73.0	451.1	0.469	7.877	10.766	3291.3	634.3	574.7	4856.6	9356.9
74	05-12-18 02:04:31	109.000	141.15	1350.9	73.0	451.3	0.470	7.877	10.766	3291.8	634.4	574.7	4858.5	9359.4
75	05-12-18 08:04:31	115.000	141.13	1350.7	73.0	451.4	0.469	7.877	10.766	3291.3	634.2	574.7	4860.2	9360.4
76	05-12-18 16:04:31	123.000	141.10	1350.4	73.0	451.7	0.470	7.877	10.766	3291.3	634.1	574.7	4863.0	9363.2
77	05-12-19 00:04:31	131.000	141.08	1350.2	73.0	452.0	0.469	7.877	10.766	3291.2	633.9	574.7	4865.8	9365.7
78	05-12-19 08:04:31	139.000	141.05	1349.9	73.0	452.2	0.470	7.877	10.766	3292.0	634.0	574.7	4868.5	9369.2
79	05-12-19 16:04:31	147.000	141.03	1349.8	73.0	452.4	0.470	7.877	10.766	3291.3	633.7	574.7	4870.4	9370.2
80	05-12-20 00:04:31	155.000	141.02	1349.6	73.0	452.5	0.470	7.877	10.766	3291.9	633.8	574.7	4872.0	9372.4
81	05-12-20 08:04:31	163.000	141.00	1349.5	73.0	452.7	0.470	7.877	10.766	3291.5	633.6	574.7	4873.5	9373.4
82	05-12-20 16:04:31	171.000	140.99	1349.3	73.0	452.8	0.470	7.877	10.766	3291.4	633.6	574.7	4874.9	9374.6



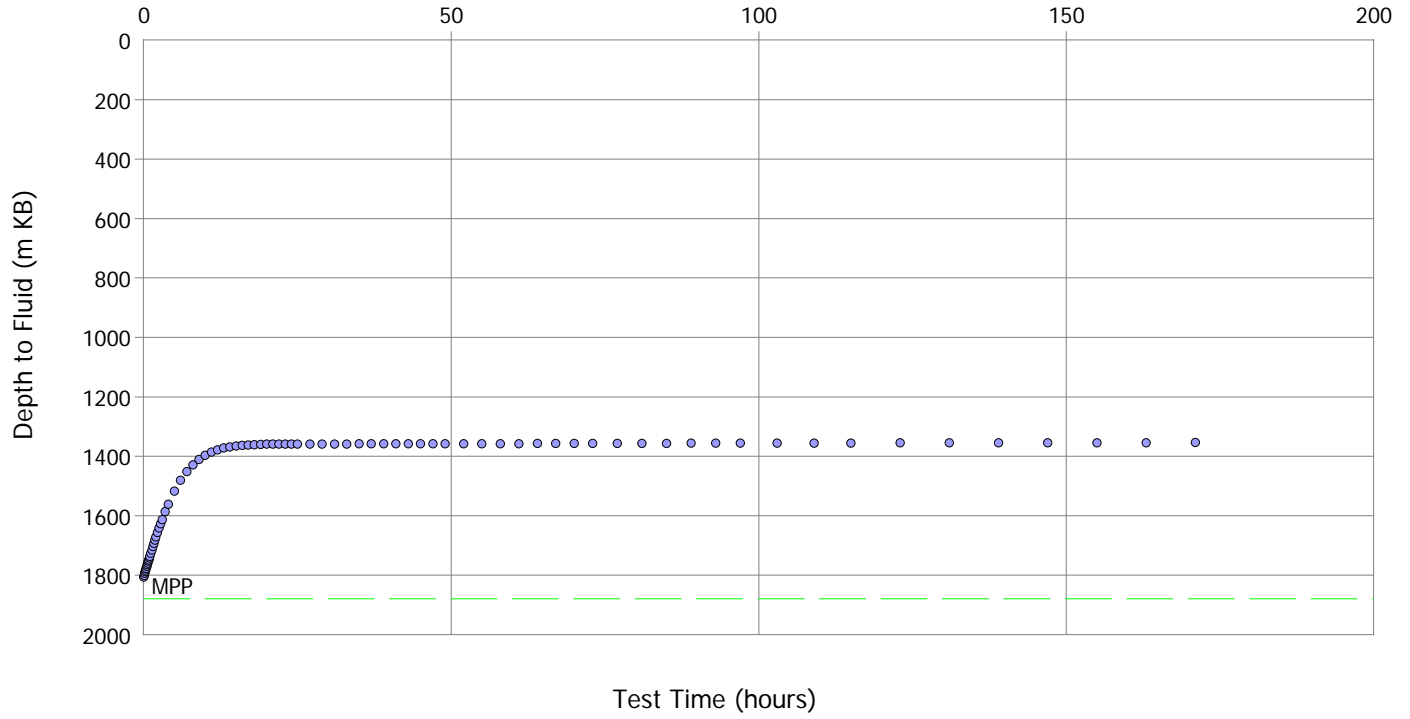
### Diagnostic Log-Log Plot



### Bottom-Hole Pressures vs. Time



### Fluid Level vs. Time



### Casing Pressure vs. Time

